

Installation help

For easy and successful installation of the necessary driver and the programmer app, please note the following hints. Depending on the operating system used, the illustrations may differ.

1. Determine your version of Windows.
 - Windows 7: Control panel -> System and security -> System -> Windows Edition
 - Windows 8: Settings -> PC-Info -> System type
 - Windows 10: Settings -> System -> About

On the selected information page you will also find the system type (32 bits = x86 / 64 bits = x64), with which the correct driver edition will later be selected.

2. The proper function of the ProgrammerApp requires a special driver, which you can download from the following website:

<http://www.silabs.com/products/mcu/pages/usbtouartbridgevcpcdrivers.aspx>

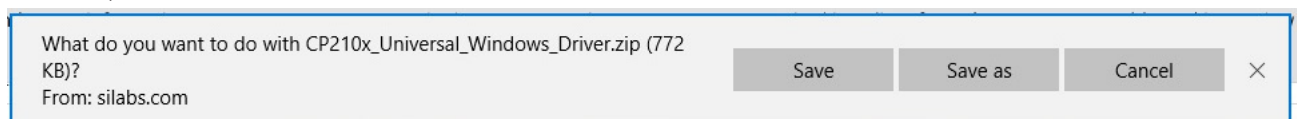
The screenshot shows the Silicon Labs website page for CP210x USB to UART Bridge VCP Drivers. The page title is "CP210x USB to UART Bridge VCP Drivers". Below the title, there is a brief description of the drivers and a link to application note AN197. The "Download Software" section states that the Manufacturing DLL and Runtime DLL have been updated and must be used with v6.0 and later of the CP210x Windows VCP Driver. There are three download sections, each with a table of software packages.

Platform	Software	Release Notes
Windows 10 Universal	Download VCP (2.3 MB)	Download VCP Revision History

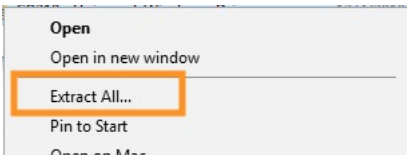
Platform	Software	Release Notes
Windows 7/8/8.1	Download VCP (5.3 MB) (Default)	Download VCP Revision History
Windows 7/8/8.1	Download VCP with Serial Enumeration (5.3 MB) Learn More >	Download VCP Revision History

Platform	Software	Release Notes
Windows XP/Server 2003/Vista/7/8/8.1	Download VCP (3.66 MB)	Download VCP Revision History

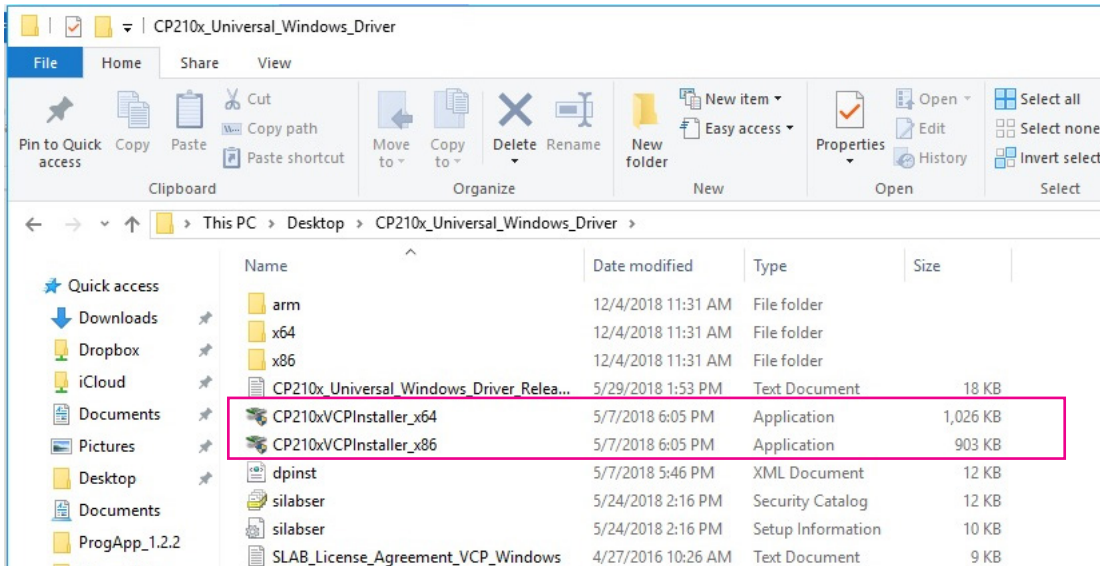
3. Download the driver according to your operating system. It is saved by default in the "Downloads" directory.



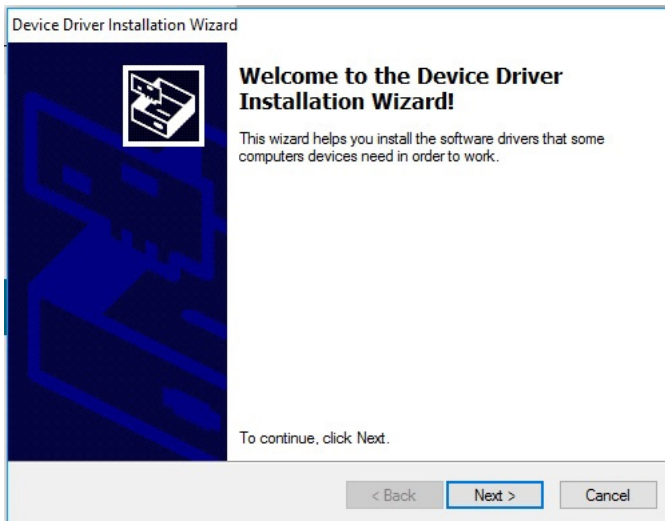
4. Right-click on the ZIP archive and **Extract** (do not "Open" !!) it to a storage location of your choice.



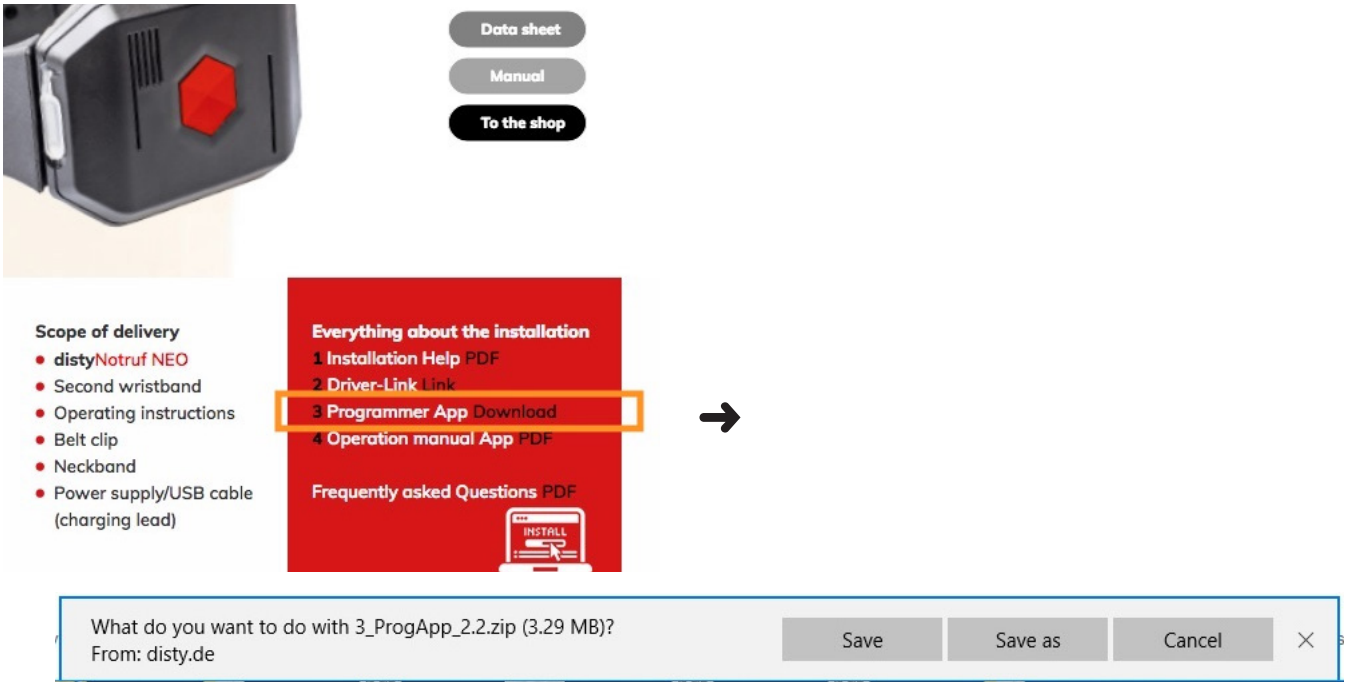
5. The new directory contains the installation files.



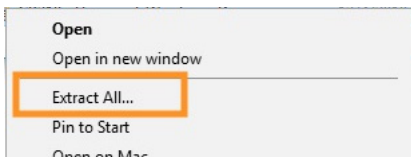
6. Start the installation with one of the two "Installers". You could find the system type (32 bit = x86 / 64 bit = x64) in the information page of your Windows version (see step 1).
If the selected version is unsuitable for your PC, you will receive a message. Just start the other one.
7. Confirm the (possibly appearing) confirmation prompt.
8. Click "Next" and follow the instructions on the screen.



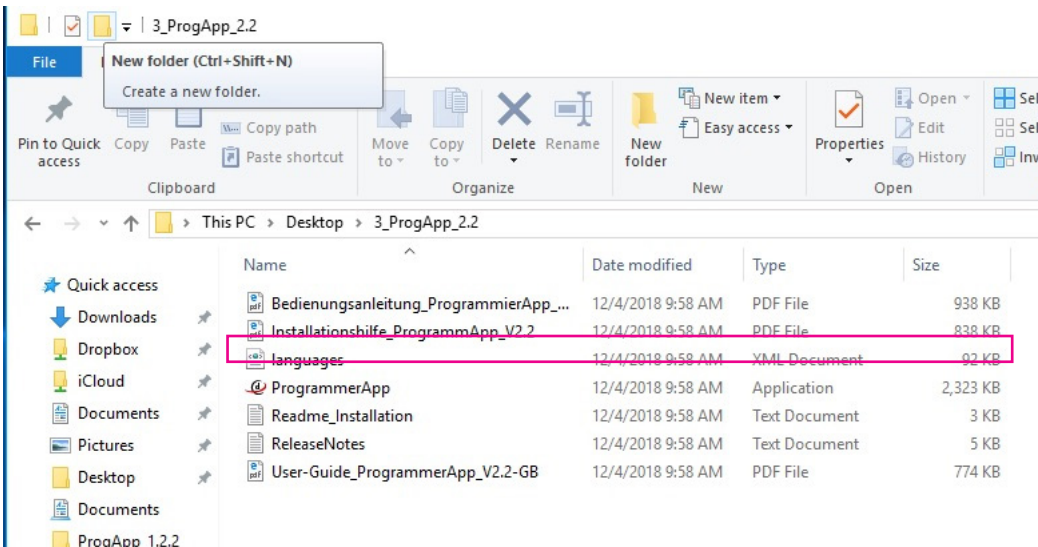
9. After successfully installing the driver, download the ProgrammerApp from the following address to your PC: <https://www.disty.de/>
By default, the file is saved in the Downloads directory.



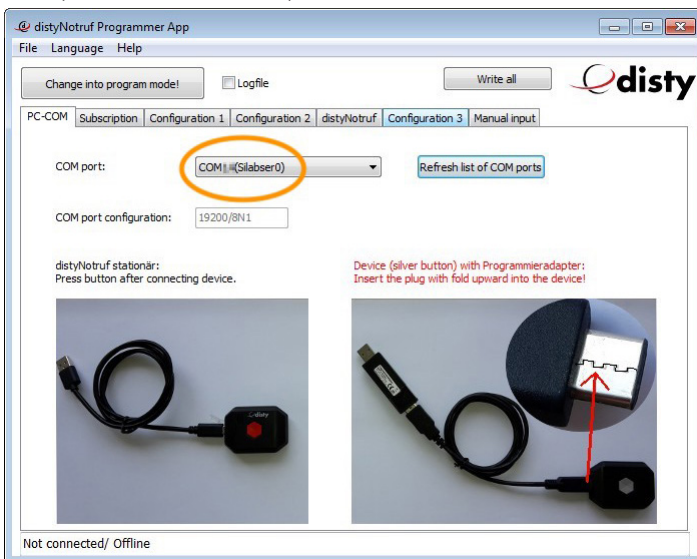
10. Right-click on the ZIP archive and **Extract** (do not "Open" !!) it to a storage location of your choice.



11. The new directory contains the programmer app as well as the manual (DE = German, GB = English), among other things.



12. Connect your distyNotruf to the PC and start the programmer app. Click "**Refresh list of COM Ports**" to update the settings of the PC. If "**(Silabser0)**" is displayed in the "COM port" field after any COM number, the installation is completed successfully.



13. Now you can start the configuration by clicking on "Change into program mode!". Further information on programming and configuration can be found in the operating instructions (PDF), which is stored in the directory together with the ProgrammerApp (see figure for step 11).

Installation help distyNotruf "Programmer App"

Modifications reserved!

Any copy, in whole or in part, requires a written agreement!

disty communications gmbh
Holzkoppelweg 14
D - 24118 Kiel
Germany

Edition 1.0
12/2018