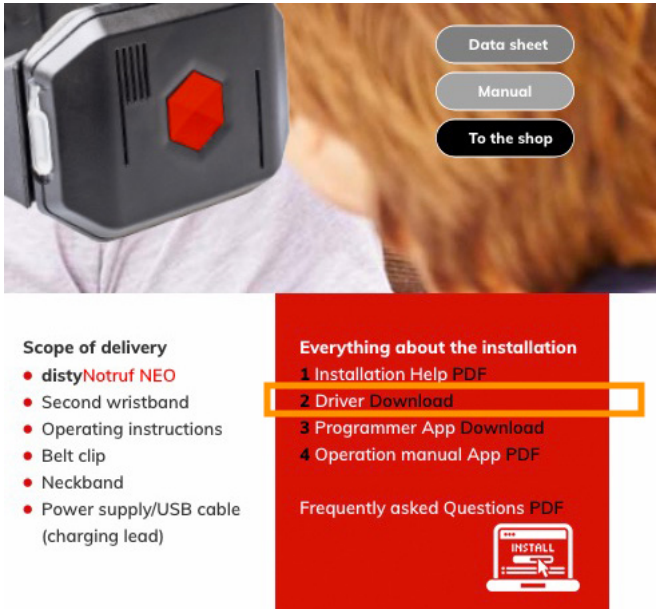


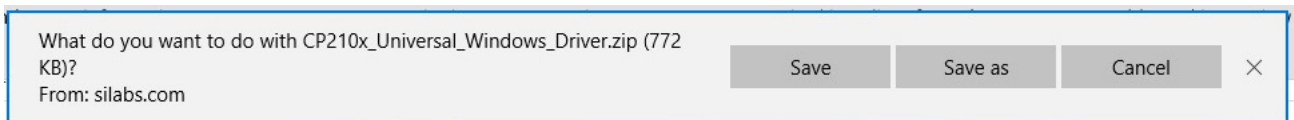
# Installation help

For easy and successful installation of the necessary driver and the programmer app, please note the following hints. Depending on the operating system used, the illustrations may differ.

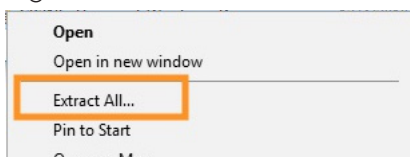
1. The proper function of the ProgrammerApp requires a special driver, which you can download from our website: <https://www.disty.de/>



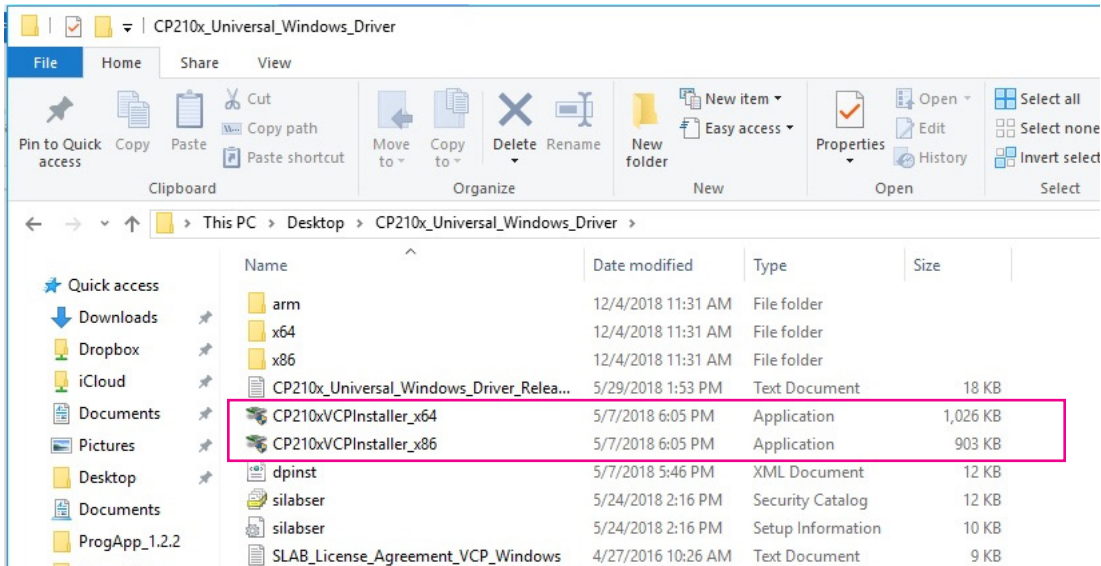
2. Download the universal driver.  
It is saved by default in the "Downloads" directory.



3. Right-click on the ZIP archive and **Extract** (do not "Open" !!) it to a storage location of your choice.



4. The new directory contains the installation files.



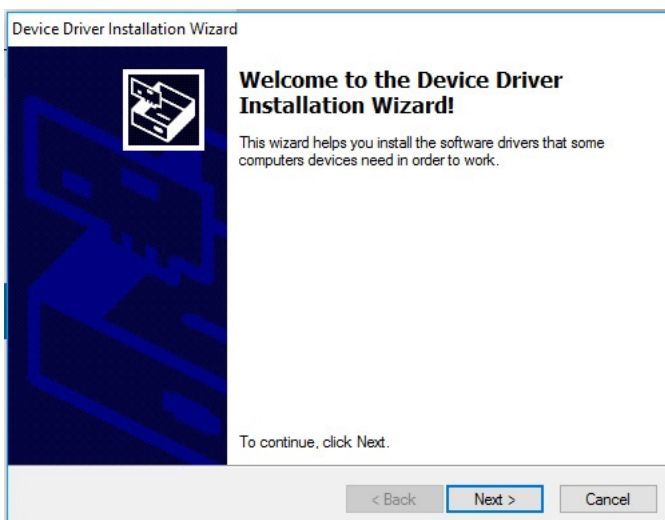
5. The driver is compatible with Windows versions 7, 8 and 10. The system type (32 bit = x86 / 64 bit = x64) of your Windows version, which will be used later to select the correct driver version, can be found on the following pages:

- Windows 7: Control panel -> System and security -> System -> Windows Edition
- Windows 8: Settings -> PC-Info -> System type
- Windows 10: Settings -> System -> About

6. Start the installation with one of the two "Installers". You could find the system type (32 bit = x86 / 64 bit = x64) in the information page of your Windows version (see step 5). If the selected version is unsuitable for your PC, you will receive a message. Just start the other one.

7. Confirm the (possibly appearing) confirmation prompt.

8. Click "Next" and follow the instructions on the screen.



9. After successfully installing the driver, download the ProgrammerApp from the following address to your PC: <https://www.disty.de/>  
By default, the file is saved in the Downloads directory.

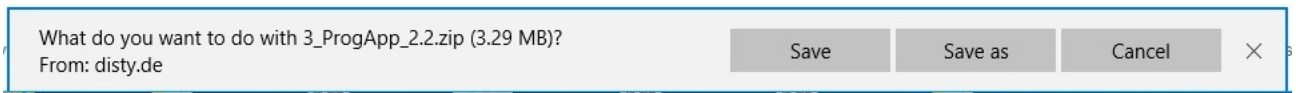


- Scope of delivery**
- distyNotruf NEO
  - Second wristband
  - Operating instructions
  - Belt clip
  - Neckband
  - Power supply/USB cable (charging lead)

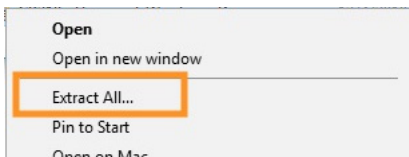
**Everything about the installation**

- 1 Installation Help PDF
- 2 Driver Download
- 3 Programmer App Download
- 4 Operation manual App PDF

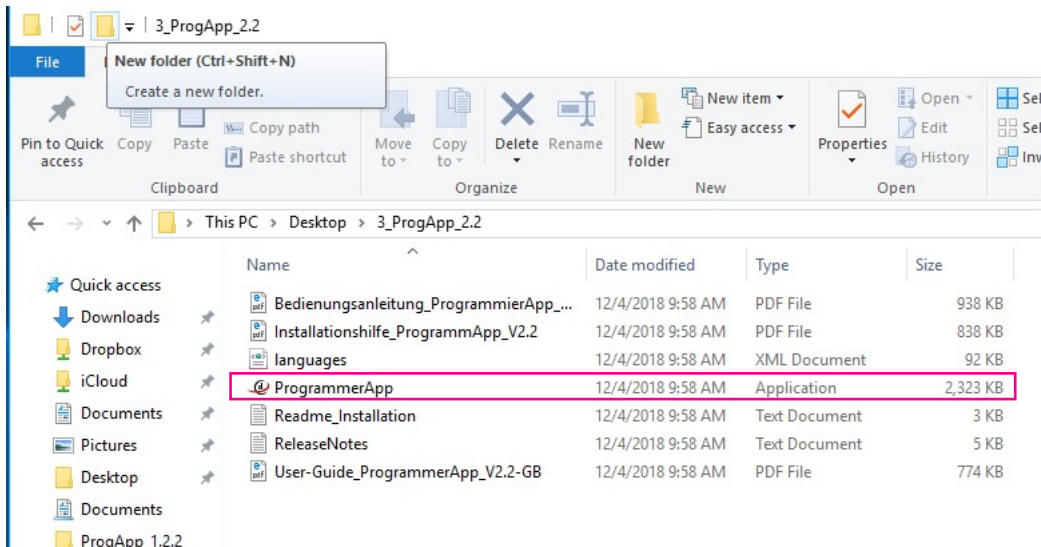
Frequently asked Questions PDF



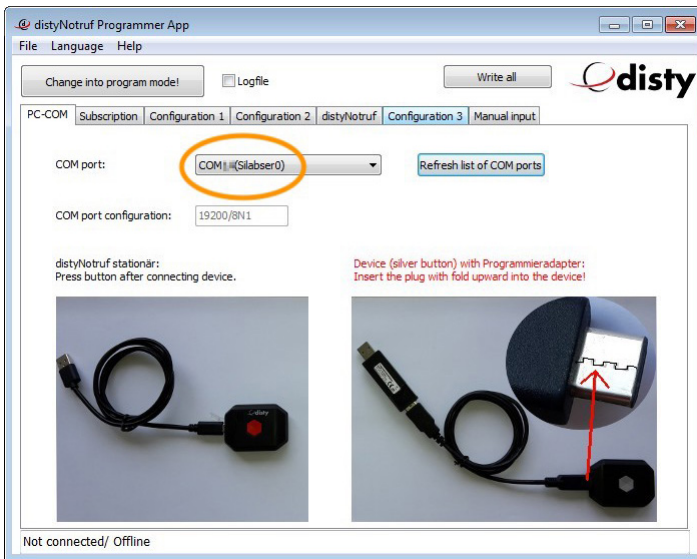
10. Right-click on the ZIP archive and **Extract** (do not "Open" !!) it to a storage location of your choice.



11. The new directory contains the programmer app as well as the manual (DE = German, GB = English), among other things.



12. Connect your distyNotruf to the PC and start the programmer app. Click "**Refresh list of COM Ports**" to update the settings of the PC. If "**(Silabser0)**" is displayed in the "COM port" field after any COM number, the installation is completed successfully.



13. Now you can start the configuration by clicking on "Change into program mode!". Further information on programming and configuration can be found in the operating instructions (PDF), which is stored in the directory together with the ProgrammerApp (see figure for step 11).

Installation help distyNotruf "Programmer App"

Modifications reserved!

Any copy, in whole or in part, requires a written agreement!

disty communications gmbh  
Holzkoppelweg 14  
D - 24118 Kiel  
Germany

Edition 2.0  
12/2018