

Installation and operating instructions “ProgrammerApp“

for distyNotruf, distyNotruf neo, distyNotruf pro, distyNotruf stationär



Introduction

This operating manual describes the functions of the “ProgrammerApp” for the following devices:

- distyNotruf
- distyNotruf neo
- distyNotruf pro
- distyNotruf stationär

In this manual, the full scope of functions will be described which is only available for the distyNotruf pro. When connecting other devices, only the functions assigned to this particular device will be shown.

System requirements

- PC with Windows 7/8/10
- Programming adapter (not needed for distyNotruf neo, distyNotruf stationär), available online in the shop at “<https://www.disty.de/>”

Installation

1. Download the ZIP archive “SetupProgrammerApp“ from "www.disty.de" to your PC and save it.
2. Extract the ZIP archive.
Ignore any warnings about unsafe downloads of this file
3. Start the program "Setup ProgrammerApp" (confirm the security check prompt if necessary).
4. Select the language for the program.
5. Follow the instructions on the screen and confirm the license agreement, information, etc. as required.
6. After completing the installation wizard, see "Program Files / disty ProgrammerApp" for the programming software and these installation and operating instructions.

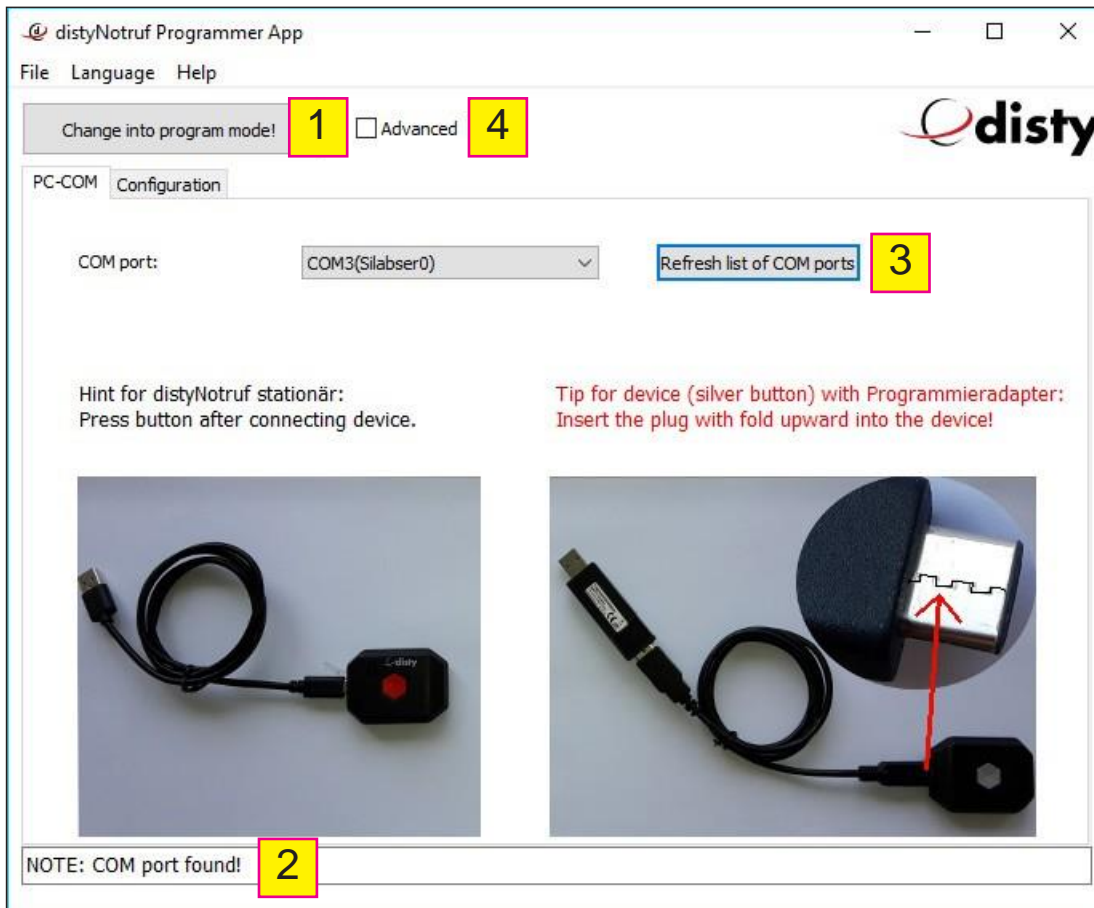
Note: If no com-Port is displayed in the Programmer App, it may be already a wrong driver version on your PC (the correct driver version for Windows 10 is 10.1.2). Delete the wrong driver version.

Disable automatic update feature of driver software in Windows, if necessary.

Start again at point 3

Start programming

- 1 First start the "ProgrammerApp".
- 2 Now connect your distyNotruf to your PC using the provided USB cable.
In the case of a "distyNotruf stationär", additional pressure on the emergency call button is required.
ATTENTION! For distyNotruf and distyNotruf pro, the programming adapter must be used (see Fig. in screenshot below). Make sure the plug is properly positioned on the device (notch on the plug up). The plug can also be plugged in the other way around, but no connection to the device will be established!
- 3 The window will appear:



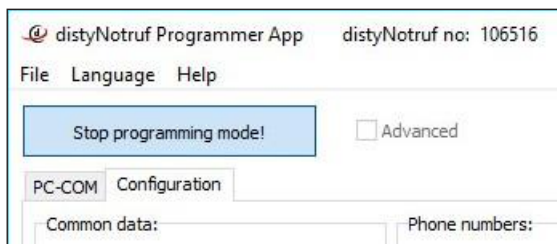
- 4 Start programming mode (1) for simple configuration (subscribe to a DECT base, input of emergency call numbers, reset of the device). If further settings are necessary (eg audio, call forwarding, call acceptance, shock sensor configuration - only distyNotruf Pro - etc.) or operate the device on special systems (eg multi-cell systems), mark the check box next to "Advanced" (4) before starting the programming mode.

After the device is detected, the data will be read from the device. If the status line (2) has a green background and both LEDs on the device light up (red and green), programming mode is active. In general, after a short time, the right COM port will be automatically detected. You can see this in the status notification on the lower edge of the window (2). If this is not the case, you can select the corresponding port from the list after clicking on the button (3).

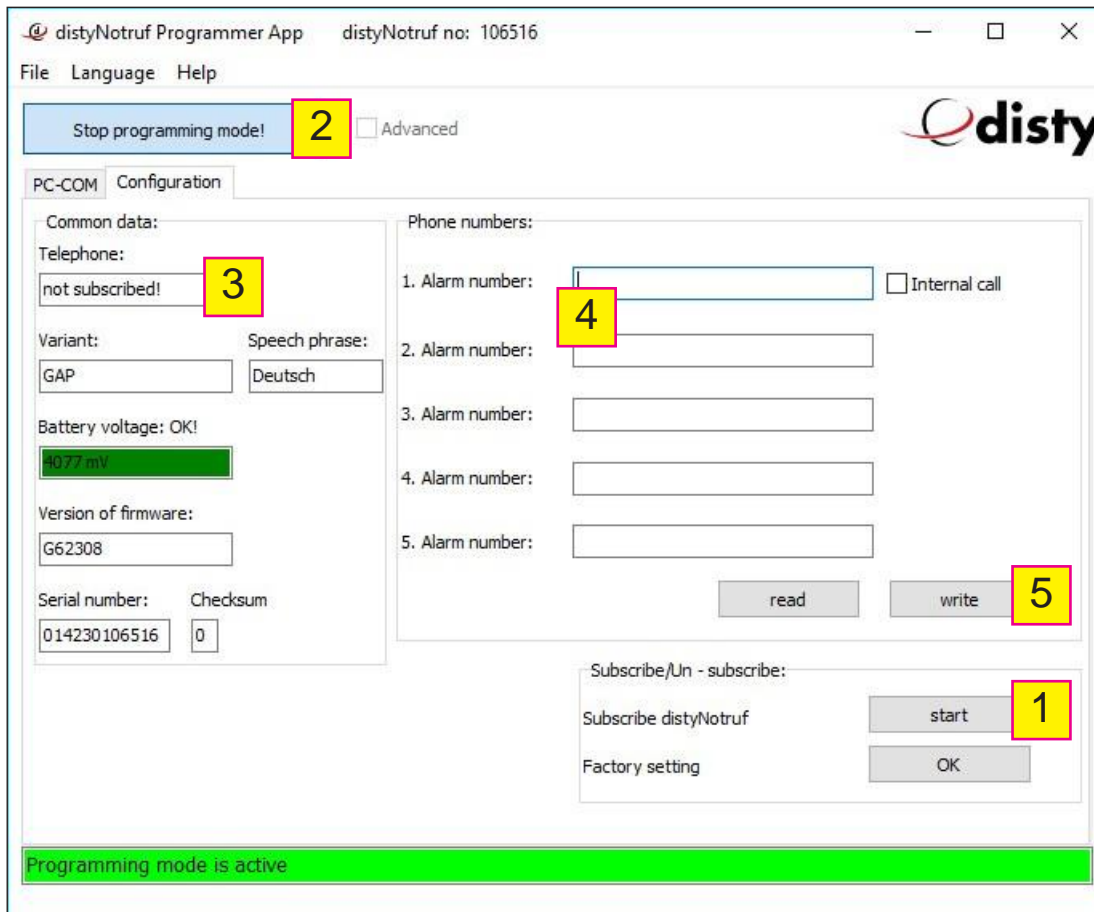
- 5 Select one of the tabs to set up the corresponding functions. These details are described in the following.

End programming

1 Click on the “Stop programming mode!” button. You can now disconnect the device from the PC.



Configuration (simple)



- 1 Prepare the base station for registering an additional handset.
- 2 Click "Start" (1) to register the distyNotruf on the base. During the registration process, the LED flashes green quickly. If the registration is successful, you will hear an acknowledgment tone.
- 3 Stop the programming mode (2) for a short time and restart it (without disconnecting the distyNotruf from the PC).
- 4 After reconnecting, you will see in the "Telephone" field (3) the identifier of the DECT base station to which your distyNotruf is connected (this is not the telephone number but a technical identifier). Below this field further technical information is displayed.
- 5 Now enter the required alarm numbers in the fields provided (4).
Is the first alarm number an internal phone number, that means if another handset registered at the same base station is to be called, the tick must be set for "internal call" (internal numbers are 1-8 and * / collective call for Gigaset).
- 6 Important: Be sure to click on "Write" (5) to save the numbers in the distyNotruf.
- 7 Exit the programming mode (2).
- 8 Now you can disconnect the operational distyNotruf from the PC.

Note: If your distyNotruf is ready for use, the green LED flashes once every 10 seconds. When the device is charging, the red LED flashes every second in addition.

Advanced Configuration

Subscription

distyNotruf Programmer App distyNotruf no: 106516

File Language Help

Stop programming mode! Advanced **4** Write all

PC-COM Subscription Configuration 1 Configuration 2 distyNotruf PRO Configuration 3 Manual input

Authentication code (AC): **1** 0000 Factory setting read **3** write

PARK: Value (hex) not subscribed! read write

Length 31 Value Checksum

SARI: Off read write

Length Value Checksum

Subscribe distyNotruf **2** Now!

Programming mode is active

- 1 Enter the PIN for the base station (1) on which you want to register the device. You can find additional information in the documentation for the corresponding base station (factory default is “0000”).
Note: The entries within the dotted markings are only required when registering on special systems (e.g. multi-cell systems).
- 2 Prepare the base station (GAP-capable) to register an addition mobile part (see base station instructions). Click on “Now!” (2) to start the registration process. The blinking green LED indicates that the device is looking for a base station waiting for incoming registration.
- 3 Once the device has been successfully registered, a confirmation tone will sound and the green LED will flash once every 10 s. If the device is charging, the red LED will flash every second in addition.

Note (applies to all entry screens):

By pressing the “read” button (3), the data stored on the device will be read out and displayed in the corresponding entry fields. When you have made the changes, click “write” (3) to transfer the new data to the corresponding entry field on the device.

If you want to perform the configuration all at once and not transfer it bit-by-bit, first enter all of the

Advanced Configuration

information and then click “Write all” (4). Before switching to another tab, the modified data must be written to the device.

Configuration 1

The screenshot shows the 'distyNotruf Programmer App' window with the title bar 'distyNotruf no: 106516'. The menu bar includes 'File', 'Language', and 'Help'. A toolbar contains 'Stop programming mode!', 'Advanced' (checked), and 'Write all'. The 'disty' logo is in the top right. Below the menu bar are tabs for 'PC-COM', 'Subscription', 'Configuration 1', 'Configuration 2', 'distyNotruf PRO', 'Configuration 3', and 'Manual input'. The main area is divided into sections: 'Alarm number' with a text box containing '1' and an 'Internal call' checkbox; 'PIN' with a text box containing '0000'; 'Audio' with three sliders: 'Loudspeaker' (range 1-8, value 4), 'Indication tone' (range 1-2, value 1), and 'Signal tone' (range 0-3, value 2); and 'Bell ring' with a 'Ring type' dropdown set to 'Beep, 1 kHz, slow' and a 'Group ring' checkbox checked. A green bar at the bottom reads 'Programming mode is active'.

1 Alarm number

Entry of the first telephone number called when the emergency button is pressed. If this is an internal extension, i.e. another mobile telephone registered on the same base station should be called, the checkmark next to “Internal call” must be activated (internal numbers are 1-8 and */group call for Gigaset). You can enter additional alarm numbers under “Configuration 2” (next page).

2 PIN

Entry of a PIN for remote access to the device from another telephone (DTMF signaling).

Remark: The device allows remote access using an MFV-capable telephone similar to remotely accessing an answering machine. If a customized PIN (not “0000”) has been entered here, it must be entered for remote access.

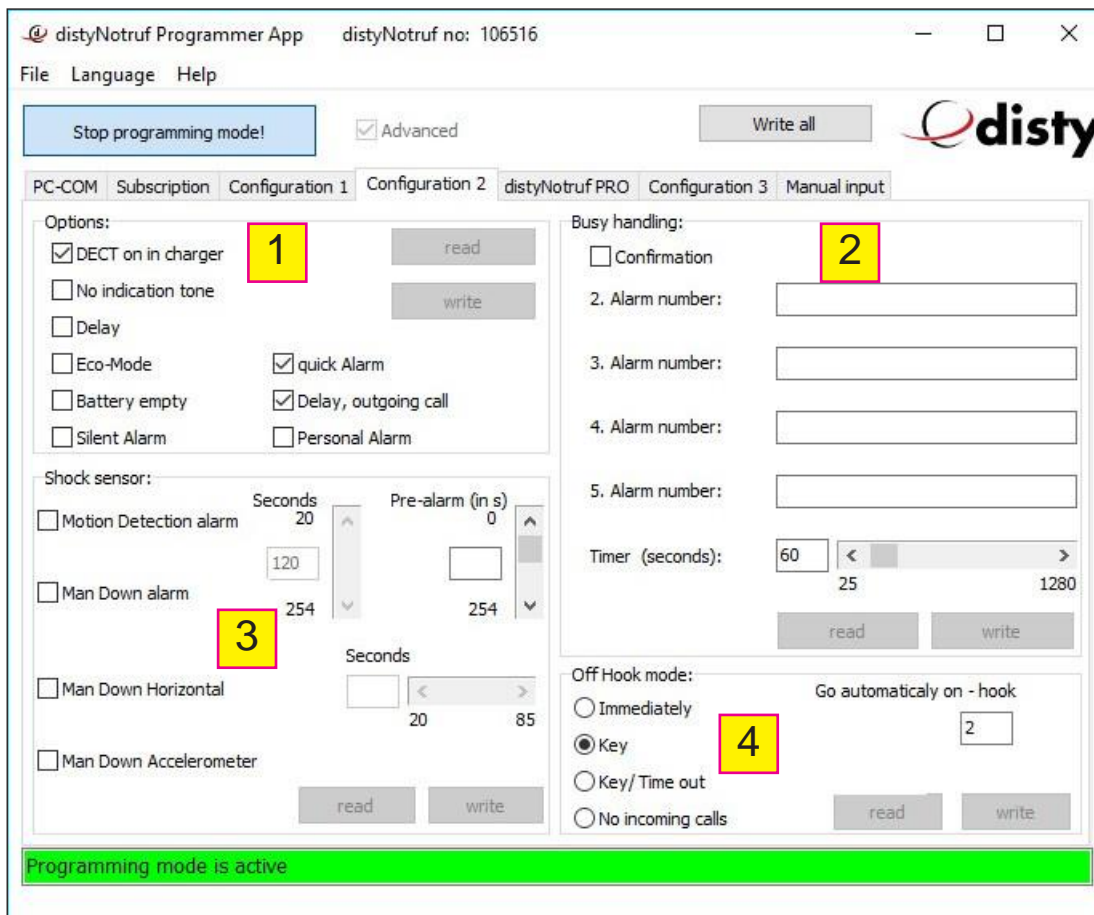
3 Audio

- Loudspeaker: Setting the volume for telephone calls (1= quiet / 8 = loud).
- Indication tone: Setting the volume for the ringer (1= quiet / 2 = loud).
- Signal tone: Setting the volume for the signal tone (1= quiet / 3 = loud).

4 Bell ring

- Ring type: Select a ringtone from the list to signal incoming calls on the device.
- Group ring: If you are operating the device on, e.g. a Panasonic basis, this feature must be activated (checkmark activated) to ensure error-free signaling.

Configuration 2



- 1 Options (the descriptions pertain to the marked features (checkmark activated))
- DECT on in charger: The telephone/emergency call function also remains active when the device is charging.
 - No indicationtone: Incoming calls will only indicated visually, not acoustically.
 - Delay: Microphone and alarm button inactive for the first 5 seconds.
 - Eco-Mode: The device functions as a pure emergency call placement unit. The receiver is switched off and no incoming calls can be accepted. This increases the battery life to the maximum. This setting must be complied with for the “distyNotruf stationär”.
 - Battery empty: In addition to the local signaling when the battery is almost empty, a call will be made to the saved emergency numbers with a notification.
 - Silent Alarm: Alarm calls are made silently and no signal tone sounds.
 - Quick Alarm: The alarm call will be triggered by briefly pressing the button. Please note that with this setting, the alarm may be triggered unintentionally! If this feature is switched off (checkmark NOT activated), the button for triggering the alarm call must be pressed for approx. 1 second.
 - Delay, outgoing call: While dialing or hearing the dial tone, the microphone is shut off.
 - Personal Alarm (not available on all devices): This setting makes it possible to directly call the second saved emergency number (“2. Alarm number”) by pressing the emergency call number twice in quick sequence. The prerequisite is that the second emergency number has been entered and call forwarding (“Busy handling”) is NOT activated (checkmark NOT activated). At the same time, the short button press will be deactivated, i.e. if pressed normally, the button has to be held down for approx. 1 second.

2 Busy handling

If additional emergency numbers have been stored (“2. Alarm number”, “3. Alarm number”, etc.) and call forwarding is activated (checkmark activated), if the call to the first emergency number (see “Configuration 1”) is not accepted or the line is busy, the next emergency number will be called. The time until this happens can be set in seconds in the “Timer” field.

3 Shock sensor (distyNotruf pro only)

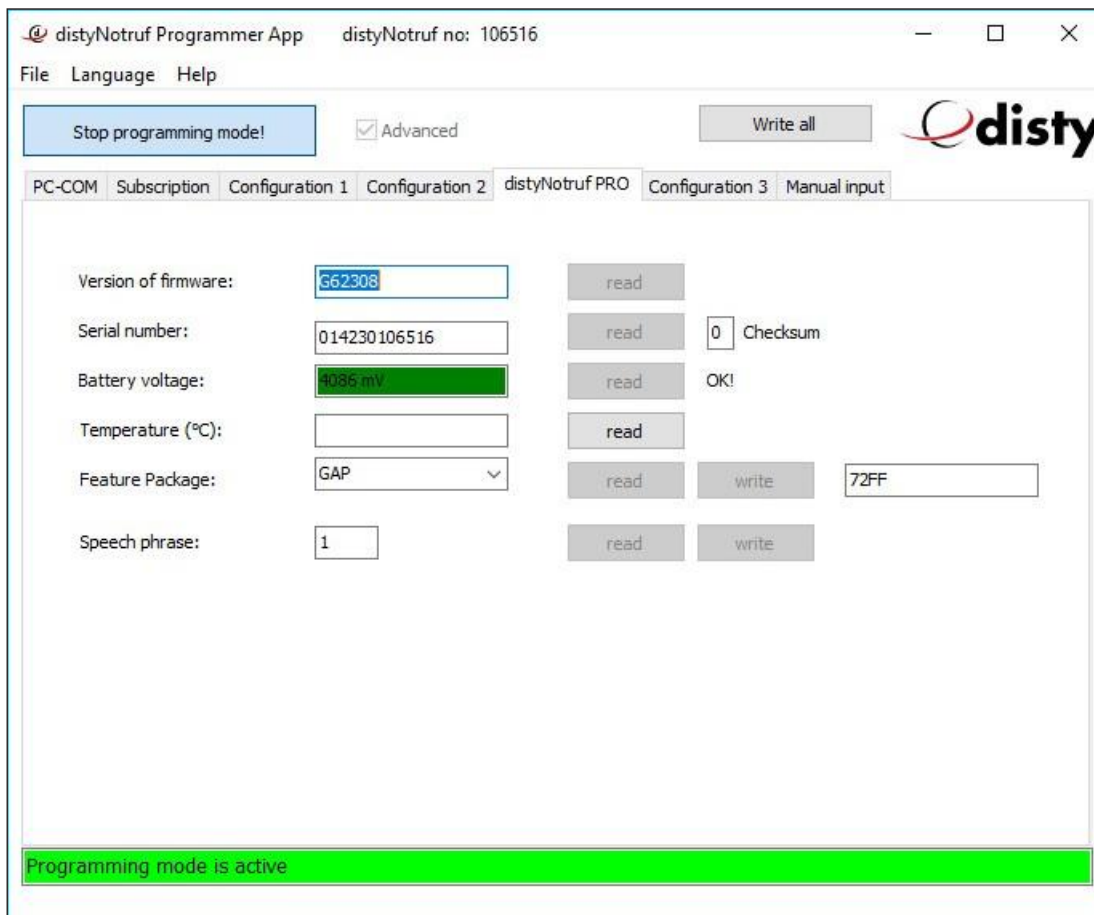
Important notice!

- The shock sensor only works if the device is not charging.
- “Motion Detection Alarm” and “Man Down Alarm” cannot be activated simultaneously.
- The alarm call will be triggered after the time set under “Voralarm” has passed. The “Vor- alarm” phase is signaled by the blinking red LED and a beep (every 2 seconds) and allows the device wearer to cancel an (erroneous) alarm call by pressing the emergency call button.
- When using the “Man Down Accelerometer” and/or “Man Down Horizontal” functions, the device must be worn at the hip (belt clip). It is important to attach the device so it can record all of the body’s movements.
- Motion Detection Alarm: The alarm will be triggered if an impact is detected after a set time during which no movement is registered. Example: If e.g. 180 seconds (= 3 minutes) are set, an emergency call will be placed if the device does not move for at least 3 minutes and then movement is detected.
- Man Down Alarm: The alarm will be triggered if no movement is detected within a set period of time.
Example: If e.g. 240 seconds (= 4 minutes) are set, an emergency call will be placed if the device does not move for at least 4 minutes.
- Man Down Horizontal: The alarm will be triggered if the device is in the vertical or horizontal position for a set period of time.
- Man Down Accelerometer: The alarm will be triggered if a typical acceleration profile of a falling person is detected.

4 Off Hook mode

- Immediately: An incoming call will be immediately accepted. A short signal tone will sound, the green LED will light up and the users can speak.
- Key: The key has to be pressed to accept a call.
- Key / Time out: An incoming call will be accepted by pressing the key or, if this doesn’t happen after 40 seconds, the call will be automatically accepted.
- No incoming calls: Calls will not be signaled and cannot be accepted.
- Go automatically on-hook (busy tone detection): When operating with a “normal” DECT basis, you do not need to change anything. If, however, you are operating the device directly with a telephone system, it may be necessary to modify this setting.

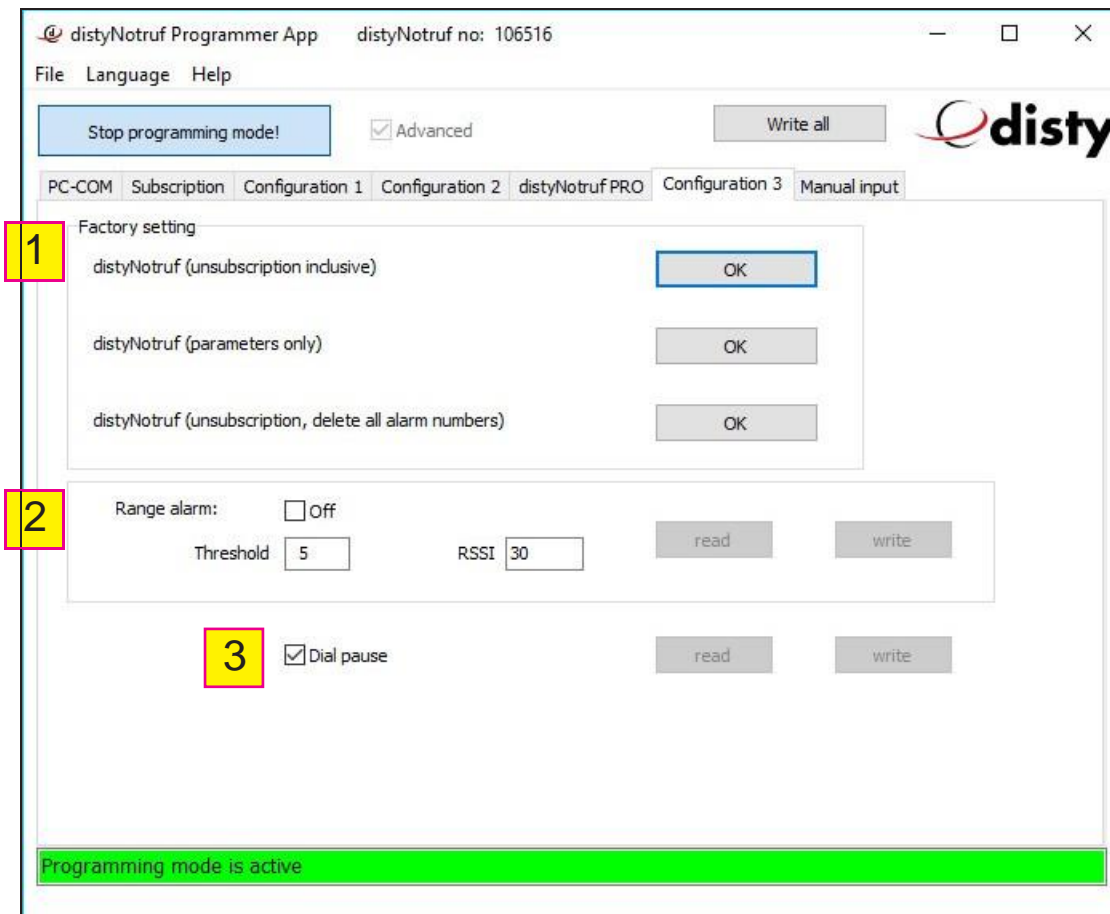
distyNotruf info (for instance, distyNotruf pro will be displayed)



Display

- Version of firmware
- Serial number
- Battery voltage
- Temperature (distyNotruf Pro only)
- Feature Package (for operation with a variety of alarm servers / distyNotruf Pro only)
- Speech phrase: Selection of the language for the speech texts (1 = German, 2 = English, 3 = French, 4 = Italian, 5 = Spanish).

Configuration 3



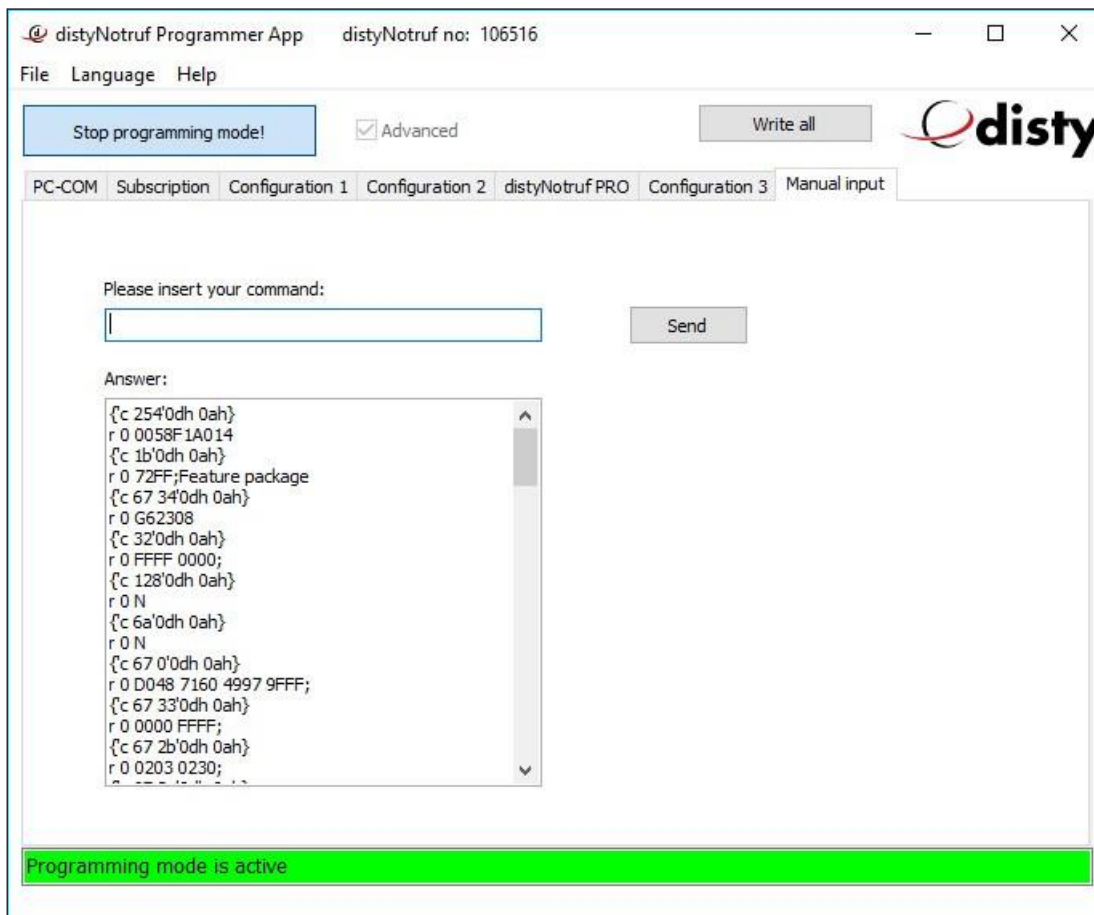
1 Factory setting

- Unsubscription: The device will be deregistered from the base station and all registration information will be deleted. If, for instance, the base station on which the device was registered is no longer available, this is the only way to prepare the device for registration on another base station without deleting the personal settings.
- Parameters: The personal settings (e.g. volume, ringtone, etc.) will be reset. The registration information for the base station and the entered emergency call numbers will remain on the device.
- Default: The device will be reset to factory settings. All settings, emergency call numbers and the registration information for the base station will be deleted.

2 Range alarm: The device warns the user with a beep if it is at the edge of its range with respect to the base station and its functionality may be limited. The factory set values are generally optimal and should only be changed in exceptional cases. Marking the checkbox (checkmark activated) switches the function off.

3 Dial pause: When operating the device on a telephone system, this feature must be activated (checked), so that after the first digit a dialing pause is inserted to secure the outside line.

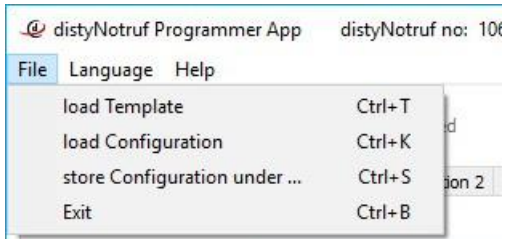
Manual input



This menu is only for servicing purposes.

Menu functions

Menu “File“



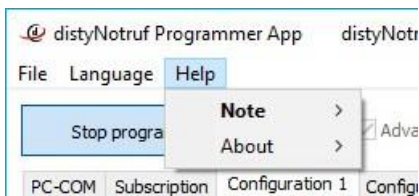
- load Template: Load preset parameters onto one or more devices.
- load Configuration: Load an already saved configuration onto the device.
- store Configuration under...: Save the current configuration of the connected device.
- Exit: End program.

Menu “Language“



- Select a language for the screen texts in the “ProgrammerApp”.

Menu “About“



- Information about the program version.

Installation and operating instructions distyNotruf "ProgammerApp"

Subject to change!

Any copying, including excerpts, require a written agreement!

disty communications gmbh
Holzkoppelweg 14
D - 24118 Kiel
Germany

Version 3.1
Issue 03/2019